

USE

# LIONSMEET

THE  
OCCASIONAL  
NEWSLETTER  
OF THE OLD  
LOCOMOTIVE  
COMMITTEE

---

ISSUE No. 17. SPRING 1989

---

**THE AGM WILL BE ON SATURDAY 27th. MAY.**

**SUPPER AFTERWARDS BY SPECIAL ARRANGEMENT**

**WITH THE CHATSWORTH HOUSE HOTEL**

**THE PROMENADE LLANDUDNO**

**CHAIRMAN AND SECRETARY NO LONGER  
ELIGIBLE FOR RE-ELECTION**

## ANNUAL GENERAL MEETING.

Notice is hereby given that the fifth A.G.M. will be held on Saturday 27th. May 1989 in the Chatsworth House Hotel Llandudno at 4.15 p.m.

Members wishing to have any item included on the Agenda must inform the Secretary not later than Wednesday 10th. May.

The Executive Officers eligible to resubmit themselves for re-election have already agreed that their names may go forward.

They are:-

Mr. Charles Taylor	Hon Treas.
Mr. Barry Smith	Museum Rep.
Mr. Eddie Ball	Sales Officer.

Mr. Alan McKirdy is also eligible for re-election and has agreed to stand for the office of Chairman.

Ms. Jan Ford has agreed to stand for the office of Hon. Secy.

Candidates for these two offices must be specifically proposed, seconded and voted on at the AGM. (Rule 11).

Messrs. E.F. Clark, Charles Taylor-Nobbs and David Neish have been re-elected four times and under Rule 11 must retire.

It would be helpful if an active modeller would allow his/her name to go forward in order to continue the excellent contacts and liason duties undertaken over the last five years so ably by David.

It is anticipated that LIONSMEET will continue as an annual event and a person well acquainted with the various model engineering societies would be a great asset to the Executive.

After the formal business of the meeting it is hoped to have a short address from Ms. Loraine Knowles, the recently appointed Curator-Designate of Regional History at the Museum, to give us some insights of the future plans for Merseyside and the projected programme for LION in the foreseeable future.

As soon as possible following the meeting, and certainly no later than 7.00 p.m. the annual dinner will take place in the Chatsworth House Hotel

# CORONATION

5000<sup>TH</sup> ENGINE BUILT AT THE LOCOMOTIVE WORKS CREWE - JUNE 1911

A four course meal will be served. The cost should be less than £10 per person.

The disadvantage is that the room is very strictly limited to 50 places and whereas OLCO is getting priority, members from other societies in Llanduno for the re-enactment on the following day are anxious to join us and will require at least half the available places.

IT IS IMPERATIVE THAT MEMBERS WISHING TO BOOK FOR THEMSELVES, FAMILY AND/OR FRIENDS DO SO BEFORE THE 6th. MAY.

Sunday 28th. May, which is about as close as we can get to the anniversary, Sunday 13th. June in 1937, when the original event took place, will be the re-enactment of the scene described in the last LIONSHEART.

The object will be to re-enact the scene depicted in Ron Broys painting, commissioned by David Neish, of the event filmed by the LMS in 1938 for their publicity film *CORONATION SCOT* and now available in a video from Woolworths. Title; GREAT BRITISH TRAINS.

Several M.E.Societies will be actively involved. Four parallel portable tracks will be erected in the field which is adjacent to the original event. We have been promised the 5"6. streamlined *CORONATION SCOT* belonging to Mr. Alan Woods of the Harrow and Wembley M.E.S. Needless to say several versions of *LION* will be available.

We now have confirmation that at least two of the 5"6. 4-4-0 *GEORGE V* class models will be there to make the scene complete. One belongs to Ted Ball of Stoke-on-Trent (no relation as far as we know to our own respected Sales Officer) and the other to Nigel Thompson of Long Eaton.

At the moment both engines are No.1681 *PTARMIGAN* which, as most readers will know, was one of the last of the Georges to survive.

Bob Stark, the Secy. of the N.Wales M.E.S. must be one of those people who do not actually need any sleep. In addition to masterminding this weekend for us, he intends to photoatch some special CORONATION nameplates, complete with crown, for the occasion in order to have both these engines looking right for the cameras.

Interest is extremely high and the model engineering exhibition also organised by the North Wales M.E.S, in addition to the already prodigious organisation of the steam events, will add to the excitement of the day as will the presence of Ron Broyd, the artist who painted the picture, with a small exhibition of his paintings.

## BOILER CERTIFS.

There will be facilities for the provision of Boiler Certificates on the day but please bring your own if you can. Basil Jones, who incidentally runs the hotel we are using, will be keeping his model shop open all day especially for those in the event. Replacement of failed parts should be no problem.

## CREWE HERITAGE

Following a further expression of sincere concern for the health of Crewe Heritage Centre, one of our favourite venues, in the last LIONSHEART we have heard that the Trust is now up and running and it is a pleasure to include a copy of their first news-sheet with this edition of LIONSHEART.

Steam hauled North west coast express trains will leave Crewe for Holyhead every Sunday at 09.30 arr. 14.49. Dep. Holyhead 16.30 arr. back at 20.56. On Tuesdays and Wednesdays dep. 10.13 arr. 14.00. Dep. Holyhead 15.05 arr. back at 19.51.

Intermediate stops are 41 mins. to Chester (61 mins. Sundays). 85 mins. to Rhyl (110 mins. Sundays. 123 mins. Llandudno (153 mins. Sundays waits for 1 hour). Fares are approx. £1 dearer than the normal return fare.

Well done Crewe Heritage Centre.

# Crewe Heritage Centre *Newsletter*

Number 1 - March 1989

## Heritage Centre Trust is formed

### Council approves far-sighted plan of action

THE Borough of Crewe and Nantwich has given Crewe Heritage Centre a major boost by approving its far-sighted plan of development.

Designs for major new attractions on the site are being worked out now and decisions on these will be made in mid-May on completion of a thoroughly researched business plan.

Supporters of the Heritage Centre will be pleased to learn that the Crewe Heritage Centre Trust was formed on Thursday 23rd February although confirmation of its charitable status is awaited from the Charity Commission.

At its meeting on March 1st the Borough Council authorised the appointment of consultants specialising in tourism, who will carry out market research and prepare a marketing plan for the Centre. This information will assist the team, who are designing the additions and alterations to the Main Exhibition Hall and the subsequent preparation of a business plan.

Design work is also proceeding on the proposed running shed and on a footbridge over the Crewe to Chester railway line to enable pedestrians to gain quick and easy access to the station and the proposed Heritage Centre car park, with its exits to Mill Street and Lockett Street.

#### Exciting

There are many exciting features being designed, which will attract tourists and thus allow the Centre to become viable. The Council had previously decided to support the Trust financially for a period of five years on a reducing basis. It is therefore essential to plan the site and the necessary Capital Investment on the understanding that the Centre will become self-supporting within this period. Fixed revenue overheads during the year ending March 31st 1990 are being underpinned by a grant of £80,000 from the Borough Council.

It is currently planned to open all the new facilities in July 1990. There will be

plenty of work going on up until that time and it is therefore planned to charge the public a nominal £1 fee to enter the Centre as 'a site under development' commencing on March 28th when the first Steam Special will leave Crewe station to inaugurate the regular 'Cheshire Cheese' run to Chester, Shrewsbury and Crewe. Subsequent opening days will coincide with steaming days and may be extended according to demand.

Major alterations and additions are currently being made to displays within the North Junction Signal Box and these will be open to visitors when completed.

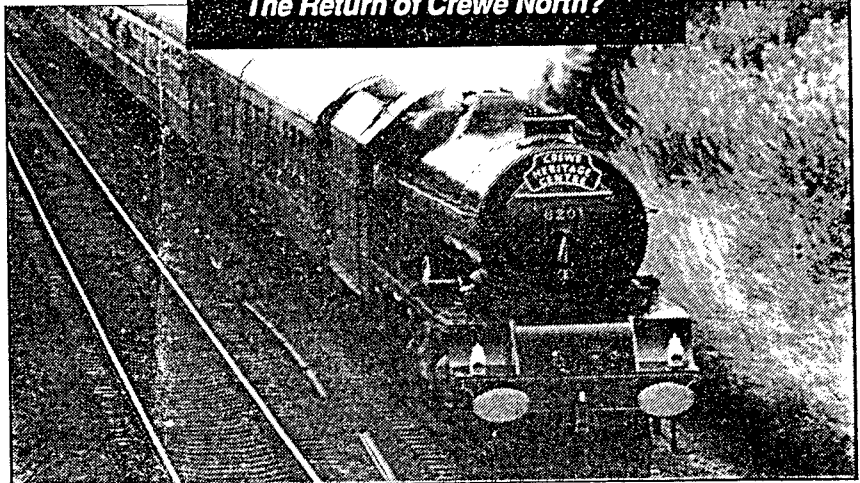
#### Best wishes for the future

CREWE Heritage Centre was born out of a desire to celebrate the 150th anniversary of the opening of the Grand Junction Railway and thus the Town of Crewe.

Major additions have taken place to the Centre since it was opened by Her Majesty the Queen and His Royal Highness the Duke of Edinburgh in July 1987, and the proposals currently being designed will result in the Centre becoming a major tourist attraction. Crewe and Nantwich Borough Council members are to be congratulated on their foresight and I have much pleasure in sending the new management my best wishes for the future.

The Worshipful the Mayor of the Borough of Crewe and Nantwich, Councillor Mrs A M Roberts MBE

#### The Return of Crewe North?



Our photograph by Tom Knight shows Princess Elizabeth thundering past the Rolls-Royce Motor Cars factory, in Crewe, during 1988

TRAINS steaming out of Crewe Station packed with holidaymakers heading for the North Wales coast.

#### A dream?

6201 'Princess Elizabeth', who began the pipedream in 1988 running on the Crewe-Chester-Shrewsbury triangle will continue to make it a reality in 1989, along with several other main line steam locos which will use the Heritage Centre as their 'shed'.

What a bonus for the people of Crewe who remember the early 50's when steam was in abundance. This will surely be the beginning of a new era in Crewe and the rebirth of the 'North Shed'.

The inaugural run is planned for March 28th with many other scheduled throughout the summer (booking commences 3rd March at the BR Travel Centre, Crewe).

## Support Crewe's tremendous heritage

SINCE the Steering Committee was formed in October 1987, there have been many meetings where all concerned have worked towards forming the Trust and organising and running the Heritage Centre

The stage is now

set for Crewe and Nantwich Borough Council to entrust the Heritage Centre to a new organisation and I invite all interested in Crewe's tremendous heritage to participate in its further development.

David Lindsay

## Cash injection from County Council's Museum Services Unit for signal box

CHESHIRE County Council recognises the important contribution that Crewe makes to the County as a whole, and is therefore keen to help increase its potential in the tourism and heritage market.

As a result, £30,000 has been earmarked towards the first venture of this nature in the area, namely the Crewe Heritage Centre. It was agreed the money should go on refurbishing the signal box, as this was both the major historical building on the site, and a direct link to the area's railway heritage.

Work on the project is being carried out by Cheshire Museums Services Unit, and involves interpreting various aspects of technical rail operation, principally signalling, to the general visitor.

To do this will involve the use of a model railway

demonstration, and video techniques as well as graphic display panels. Social history will also be featured by using oral history material to look at the work of a Crewe signaller in the 1940's. The signalling room will remain an important demonstration area with video interpretation added.

The signal box will be officially opened to the public on Sunday 28th May, and will be available throughout 1989 on steam days.

# Heritage Centre UPDATE

THROUGHOUT 1989, there will be plenty of activity on the Crewe Heritage Centre site involving many different projects.

Here we publish two reports giving the latest news on two special projects - the APT and locomotive 47192..

## The APT in 1989...

INTRODUCED in 1979, the APT, as it is normally referred to, was an InterCity Development train, uniquely designed to provide faster journey times on the West Coast Main Line, culminating in a passenger relief service between London and Glasgow three days a week between 1983-1985. Then from 1985-1987 it was used solely for development purposes of future electric locomotives.

Built by BREL at Derby, the allocation, which was divided between Glasgow Shields ETD and Crewe ETD, consisted of six rakes and a spare driving vehicle, numbered 370001-370007. Each rake would contain up to six articulated trailer vehicles and one non-driving motor vehicle, so that each train set would comprise of two such rakes with the non-driving motor vehicle being situated in the centre of the formation.

To meet the criteria for faster journey times, the decision between straightening the track and tilting the train over the existing track had to be made. The decision went in favour of the tilting train, hence the special features of the APT were developed.

- 1) Hydraulically-operated tilt system, controlled by sensors on the bogie frames.
- 2) Hydro-kinetic braking system, providing efficient high speed braking to stop the train within existing signalling distances.
- 3) Lightweight steel bogies, incorporating specially designed axles for use on the hydro-kinetic braking system, air bag secondary suspension of the vehicles and swinging bolster, jacks and control equipment for the tilt system.
- 4) CAPT (Driver's Aid Control - 'Control APT'), electronically controlling the indication of enhanced line speed and restrictions to driver, and acting on his response to these signals.
- 5) Four, vehicle-mounted 1000 hp, ASEA LJMA 410F separately excited traction motors, being controlled by power thyristors for variable excitation.

The above items were developed to give a maximum line speed of 155 mph and with tilt the APT could consequently negotiate curves 20%-40% faster than conventional trains.

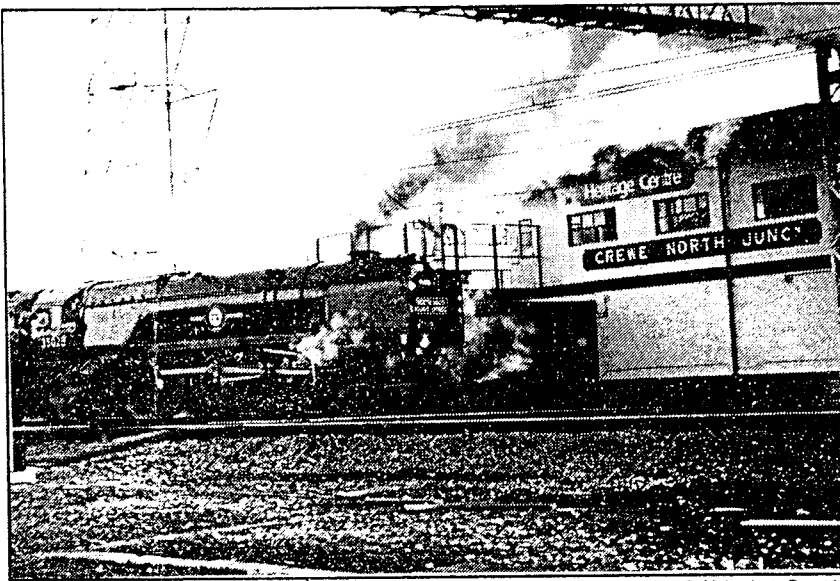
The APT was hauled onto the Heritage Centre site in June 1988 and comprises:-

Vehicles	Weight (tonnes)	Length (m)	Seating Capacity 1st/2nd	No. of axles
Non-driving motor	67.5	20.4		4
Trailer Brake First	31.9	21.0	25 + 1/0	3
Driving Trailer Second	33.7	21.4	0/52	3
Trailer First	24.3	21.0	47/0	2
Trailer Second	24.0	21.0	0/72	2
Trailer unclassified	24.15	21.0	43	2
Trailer Restaurant				
Buffer Second	26.75	21.0	0/28	2

Using the on-board generators to provide electricity, part use was made of the APT's kitchen facilities to provide hot drinks and snacks for visitors during the Summer of 1988.

Works programmed for 1989/90 include external painting, interior modifications to one coach for use as an educational facility, protection to interior of cabs to facilitate public access, modifications to some toilets and a full interpretation of the entire train to explain its significance in the history of locomotive development.

The APT is now part of the National Railway Collection and has been loaned to Heritage Centre by Kind Permission of the National Railway Museum, York.



Clan Line steams past the Heritage Centre at the start of a test run from Crewe to Holyhead on St Valentine's Day 1989  
Photograph by Chris Johnson, Cheshire Museums Services Unit

## Progress report on 47192

SINCE 47192's arrival on site, much activity has been taking place on returning her to running order and original guise of D1842 in two-tone green livery.

Withdrawn from Capital stock in May 1988 after a D examination, 47192 lay on the Crewe D.D as a source of spares. It was eventually moved to the Heritage Centre late in 1988 and 47001 was handed back to British Rail in return.

Heritage Centre staff, volunteers from Crewe and members of the 8E Association began the task of rebuilding 47192. Progress to date has been good. Mechanically, the loco is almost complete - various components have either been repaired or replaced. Electrically, progress has also been good on eliminating earth faults and a good deal of new cabling installed.

One of the biggest problems encountered was trying to establish the correct shade of the lighter band of green on the locomotive. Derby Technical Centre provided us with the original paint specifications, however this did not match up with paint found underneath nor a great deal of personal opinions! It would appear that the final colour of the paint depends to a large extent on the person mixing it and how they mix it. What is certain is that a good deal of publicity should arise when the locomotive is finished.

It was intended to have the locomotive ready by the end of January, but due to other commitments on the site, we are now aiming for Easter 1989.

I have already been approached about the possibility of D1842 visiting two preserved railway lines this year, but no firm commitment will be given until the locomotive is up and running.

If anyone is interested in helping to complete this preservation task or the next projects, then please contact me or any of the staff for further details.

Tony Mosley, Heritage Centre Manager

## Appeal for items

TO complete the current project being carried out by Cheshire County Council Museums Unit, a search is being made for the following items:-

1. One semaphore signal for siting near Signal Box A;
  2. Enamel Booking Office/Waiting Room signs circa 1930 LMS colours;
  3. Enamel Fire Exit signs (were there such things?);
  4. Green LMS lampshades, similar to those already in the viewing window room, 4 off;
  5. Four signal lamps for display lighting in main exhibition room;
  6. Signaller's uniform circa 1940;
  7. Associated material - flags, detonator, brew can/mug;
  8. One semaphore signal arm for display purposes;
  9. Waiting Room seating circa 1930;
  10. Booking Office window;
  11. Waiting Room clock.
  12. Any railway memorabilia, particularly 1930's era.
- Anyone who is able to help, please contact either Coral Nazeri or Tim Heathcote on (0606) 41331.

## Looking forward to another successful year

ON behalf of the Princess Elizabeth Locomotive Society we all look forward to another successful season at the Crewe Heritage Centre. This will be our third year at Crewe, and our efforts along with your own, will I am sure, maintain a happy working relationship. We are sure that this happy relationship will continue under the new Trust Management.

Clive Mojonner  
Secretary 6201

1. The OLD LOCOMOTIVE COMMITTEE (OLCO) is so named to establish its continuity with a group of members of the former Liverpool Engineering Society who adopted the same title circa 1928 when they arranged the rescue and restoration of the locomotive built in 1838 by Messrs. Todd Kitson & Laird of Leeds and identified as LION.
2. The objects for which OLCO was re-founded in 1984 are:-
  - A To support and promote activities associated with the locomotive LION by the following means:-
    - (i) To organize supporting activities for the locomotive when it is away from its usual place of preservation.
    - (ii) To organize supporting activities for the locomotive at its usual place of preservation.
  - B To promote knowledge of the locomotive LION by the following means:-
    - (i) To foster and promote appropriate study and research directly.
    - (ii) To act as a channel of communication between those engaged in such study or research and also those engaged in building models of the locomotive LION.
    - (iii) To collect and preserve or cause to be collected and preserved, documents and other historical matter relating to the locomotive LION, or references to such items.
    - (iv) To publish or cause to be published whatever material (including a newsletter for members) appears to the members of OLCO and its Executive Officers to relate to LION, the activities of OLCO and associated matters.
  - C To promote or carry out whatever other activities studies or the like or to purchase or acquire whatever items as shall seem appropriate from time to time to the members of OLCO and its Executive Officers in furtherance of these Objects.
3. The Executive Officers shall define from time to time as required what matters and activities are deemed to be associated with the locomotive LION and what falls outside the remit of OLCO.
4. The expenses of OLCO shall be met from subscriptions and such other funds as OLCO shall by donation or otherwise acquire. Such funds shall be applied solely towards the objects of OLCO as defined in Rule 2.
5. All paid-up members of OLCO at the time this constitution is adopted shall be confirmed as members but thereafter all admissions to membership shall be made by a properly constituted meeting of the Executive Officers who may in their absolute discretion refuse to accept or renew any application. Individual Executive Officers shall have the power to suspend temporarily the membership of any member, provided such notice is clearly given in the presence of at least two witnesses who shall be paid-up members of OLCO. Such suspension shall have immediate effect and shall continue for 14 days. Unless a properly constituted meeting of Executive Officers is held within 14 days and confirms the continued suspension of the member concerned, the temporary suspension shall lapse and the member concerned shall resume the full privileges and duties of membership. While suspended the member may not participate in any OLCO activities under Rule 2A.

12. Annual General Meetings of OLCO shall be held once in each calendar year at a time and place to be advised to the entire membership not less than 14 days in advance. At this meeting the Executive Officers shall present a report and audited accounts as per Rule 10 for adoption by the membership. Elections shall be held for Executive Officers as per Rule 11.

Extraordinary General Meetings of OLCO shall be held at the discretion of the Executive Officers or at the written request of not less than 20% of those members who are entitled to vote at an Annual General Meeting. The time, place and proposed business of such meeting shall be advised to the entire membership not less than 14 days in advance.

Decisions and elections at Annual General Meetings and Extraordinary General Meetings shall be by a simple majority vote of those members present and entitled to vote. No proxy voting shall be allowed. In the event of a tied vote, the Chairman of the Meeting shall have an extra Casting Vote.

Except as provided in Rule 13, a quorum for an Annual General Meeting or Extraordinary General Meeting shall be one quarter of all the members entitled to vote at an Annual General Meeting.

The Chairman of OLCO for the time being as elected by the members shall normally preside over Annual General and Extraordinary General Meetings. If a new Chairman is elected during the course of the meeting he shall take the chair immediately after his election. If the elected Chairman of OLCO cannot be present to take the chair at an Annual General or Extraordinary General Meeting after it has convened with due notice having been given, the members present shall elect a Chairman (for that meeting only) from amongst the Executive Officers present. If no Executive Officer is present, they shall elect one of their number.
13. Any Amendments to this Constitution shall only be made by an Annual General Meeting or Extraordinary General Meeting at which not less than one half of the members entitled to vote at an Annual General Meeting, are present. Any such proposed amendment shall be submitted in writing by its proposer and seconded to the Secretary not less than 21 days before the date of the proposed meeting. The Secretary shall circulate the text of the proposed amendment along with the notice convening the meeting to all members as per Rule 12.
14. Any proposal to wind up OLCO shall be subject to the same arrangements as set out in Rule 13 for amendments to this constitution. In the event that OLCO is wound up the Executive Officers shall after discharging all debts and liabilities dispose of any remaining funds, assets or other items in any way they think best, but always bearing in mind the purposes for which OLCO was re-founded in 1984.
15. All matters not covered by these Rules as now set out or as amended hereafter shall be determined as necessary by the Executive Officers.

5. All paid-up members at the time this constitution is adopted by their act of adopting this constitution, and all members hereafter to be elected by accepting membership of OLCO, explicitly undertake that when participating in any of the activities described in Rule 2A above they will conscientiously obey the instructions of the Executive Officers or persons specifically delegated by them as regards all matters concerned with or arising out of such activities.

These undertakings shall also be deemed to have been accepted individually by all members of any society, association or other body which accepts corporate membership of OLCO.

6. There shall be the following categories of membership of OLCO

- Individual Members
- Family Membership
- Affiliated Institutions
- Honorary Members.

All membership is subject to Rule 4. The qualification for the above categories are as follows:-

Individual Members shall be over the age of 18 years and each individual member shall pay a full subscription as per Rule 8.

Family Membership shall be available to not more than 6 persons at the same postal address. Individually such members over the age of 18 years shall have all the privileges of and shall make the undertakings (as per Rule 5) of individual membership. Family members under the age of 18 may participate in OLCO activities as per Rule 2A only to the specific extent and under such conditions as laid down in each case by the Executive Officers.

Affiliated Institutions may become members on the condition that individual members of such bodies must be aged 18 or over to be permitted to participate in activities as per Rule 2A and if participating in such activities must abide by Rule 5. There shall be no such restrictions on participation in OLCO activities other than under Rule 2A.

Honorary Members may be elected by the Executive Officers in their absolute discretion on such terms as they shall decide in each case.

Apart from participation in the activities of OLCO, members for the duration of their membership shall be entitled to the following:

Individual Members shall receive one copy of all the regular publications of OLCO and shall be entitled to attend and vote at all General Meetings.

Family Membership shall receive one copy of all the regular publications of OLCO but only one person from each such membership shall be entitled to attend and vote at all General Meetings. His or her name shall be notified in writing to the Secretary of OLCO prior to any General Meeting.

Each Affiliated Institution shall receive two copies of all the regular publications of OLCO and may appoint one delegate to attend and vote at all General Meetings. The name of the delegate shall be notified in writing to the Secretary of OLCO prior to any General Meeting.

Honorary Members - see Rule 6.

8. The subscription rate for the forthcoming year shall be determined by the Members at the Annual General Meeting on the recommendation of the Executive Officers.

8. Moneys and all other property acquired for the purposes of OLCO shall be vested in the Executive Officers as Trustees for the members.

10. The accounts of OLCO shall be prepared on an annual basis and shall be presented for approval to the Annual General Meeting. They shall be subject to audit, the auditor having been approved by the members.

11. The Executive Officers of OLCO shall manage its affairs. There shall be not less than 4 and not more than 8 Executive Officers who shall be elected at the Annual General Meeting for the period until the next AGM but shall be eligible for re-election up to 4 times, after which they shall not be eligible for election for 1 year. Only members entitled to a vote at a General Meeting shall be eligible to serve as Executive Officers.

Nominations for election as Executive Officers may be self-nominations but all nominations must be seconded at the Annual General Meeting by a fully paid-up member entitled to vote at the meeting, prior to the election. Such nominations may be made at any time prior to the election.

The Executive Officers may co-opt any paid-up member who would be entitled to a vote at a General Meeting as an Executive Officer to fill a casual vacancy, but such co-opted Officers shall serve in this capacity only until the next Annual General Meeting when they shall be eligible for re-election in the usual way. Such a co-opted Officer may only serve as an ordinarily elected Officer for 4 years before ceasing to be eligible for re-election.

At a meeting of Executive Officers, three shall be a quorum and in the event of a tied vote, the Chairman shall have an extra casting vote. No proxy or postal voting shall be permitted.

When the members elect the Executive Officers at the Annual General Meeting, two of these Officers shall be elected specifically as Chairman and Secretary. Apart from the Officers elected to these two posts by the members, the Executive Officers shall have power to appoint any of their number to other specific posts to create sub-committees to appoint individual members for specific tasks and to conduct their affairs and meetings other than as set out in this Rule, in any way as appears to them will best serve the interests of OLCO.

# Hotels and Guest Houses

Establishments offering Dinner, Bed & Breakfast at £16.00 and under (per person, per day)

NAME	ADDRESS	79216	60	F11	2	2	2	1	9.00-9.50			
										8.50		
St. David's	32 Clifton Road	78379	62	F11	20	2	3	2	8.50			
St. Helier	10 Clifton Road	75551	51	F5	25	3	5	3	9.50-11.50			
St. Hilary	Promenade	74107	55	G12	RL	22	4	2	1	2	5	10.00-13.00
St. Katherine's	51 Church Walks	76803	46	H12	RL	56	4	13	8	4	5	10.00-11.00
Seaclyffe	Church Walks	77785	61	F11	RL	31	5	4	2			9.50
Senarth	Deganwy Avenue	75313	55	F5	RL	40	8	12	9	2	6	10.50-14.00
Sherwood	Promenade	77116	55	G12		20	3	3	2	1	5	9.50-10.50
Stella	64 Church Walks	75056	56	E11		2	2	2	2	1		On application
Stoneleigh	10 St. David's Road	77962	59	F5	RL	27	6	10	4		4	11.00-13.00
Stratford	Promenade	76882	61	E11	RL	26	5	2	2	1	2	8.50-10.00
Sunnycroft	4 Claremont Road	77727	56	D14	RL		2	2	2	2	2	9.50-11.00
Tan-y-Marian	West Shore	75860	56	E10	RL	26	4	4	1	2		9.00-10.00
Trevlyn	25 Trinity Avenue	78922	62	E10		20	5	4	2	7	7	9.00-9.50
Trinity Lodge	11 Trinity Avenue	76628	51	E9	RL	26	2	7	2	7	9	10.00-12.00
Vaughan	30 Vaughan St.	77047	51	F8	FL	4	4	4	6	12		13.50
Ventnor	Promenade	76493	56	G12		15	1	5	1			8.50-9.00
Vine House	23 Church Walks	76823	52	G12	RL	45	10	3	3	1	7	10.50-11.50
Warwick	56 Church Walks	78016	56	F11	RL	4	2	4	2	4		9.00-10.00
Wedgwood	6 Deganwy Avenue	77450	59	G11	RL	5	2	2	2	4	3	10.50
Westbourne	8 Arvon Avenue	77996	52	F13	RL	6	4		2	2		10.00-12.50
Westdale	37 Abbey Road	76103	46	G10	RL	65	3	8	16	12	13	10.25-13.25
White Heather	St. George's Place	76888	56	E12	RL	5	4	3	54			8.00-10.00
Willowsmere	4 Maelgwyn Road	75486	62	E9		3	3	2				8.50-9.50
Windermere	6 Vaughan Street	76144	61	H12		14	1	4	1	1	2	9.00-11.50
Winston	5 Church Walks	78773	52	D10	RL	40	6	7	1	1	5	9.00-9.90
Woodlands	47/49 Trinity Avenue	77349	52	G12	RL	29	3	3	3	2		10.00-11.00
Wyngarth	11 Abbey Road											
Bryn Arthur	37 St. Mary's Road	75782	67	E10		12	1	2	2			7.00-8.00
Bryn Rose	16 Abbey Road	76278	53	H12		16	1	4	2		2	8.50-9.50
Bryn Tawel	19 St. David's Road	78215	61	G12		17	2	6	2		1	10.00-12.50
Bryn Tiron	44 Church Walks	77979	53	E11		1	2	3	1			8.50-9.00
Cadyan	3 Caroline Road	76704	53	G13		21	5	1	1		2	9.25-9.75
Canberra	6 St. Seiriols Road	78550	59	E11		14	3	1	1		1	7.50-8.00
Carmel	Promenade	75959	61	E11		8	1	3	3		1	8.50
Carmen	4 Carmen Sylva Road	77843	57	F5	RL	22	5	4	4	5	1	9.50-12.00
Charlton House	5 Charlton Street	76361	48	F5	RL	36	5	4	4	4	1	10.50-12.50
Claremont	7 Claremont Road	78255	51	E3		20	5	1	1		5	9.00-12.00
Cleave Court	1 St. Seiriols Road	76763	54	E11	RL	18	2	3	3		3	8.50-9.50
Cliffbury	34 St. David's Road	77849	61	E11		14	2	2	1		1	9.50
Craig Ard	3 Arvon Avenue	77224	54	E11		1	1	2	3		3	9.00
Craiglands	77 Mostyn Avenue	77318	48	G12	RL	39	6	6	3	2		8.50-11.00
Crewod	77 Mostyn Avenue	75090	48	F5		14	1	4	1		6	9.25-10.95
Crickleigh	37/39 Lloyd Street	78366	54	F4		10	1	3	2	1	2	8.00
Cumberland	North Promenade	75928	48	F11	RL	36	4	4	3	5	1	10.50-11.50
Del Mar	12 Deganwy Avenue	76379	49	G11	RL	55	10	4	2	3	2	10.50-11.50
Denton House	24 Church Walks	77492	54	F11	RL	37	4	4	3	2		8.50-9.50
Derby	Promenade	75105	59	G12		17	1	5	1		1	8.00-8.50
Dolphin	Deganwy Avenue	77742	52	F5	RL	26	4	4	1	1	2	10.50-14.00
Fernbank	9 Chapel Street	75668	49	F11	RL	60	8	8	6	2	1	8.50-9.50
Fron Deg	1 Caroline Road	77708	61	F11		24	7	1				7.50-8.00
Granby House	9 Deganwy Avenue	77708	61	F11		6	1	1	1		1	7.50-8.00
Green Downs	23 Clifton Road	76095	49	F11	RL	15	3	3	1	1	7	11.50-12.00
Hatfield	12 St. David's Road	78113	60	F11		20	3	2	1	2		7.50-8.50
Hayley House	22 Church Walks	76518	54	E11	RL	20	2	3	3	2		8.50-9.00
Hazelbank	24 Clifton Road	79249		G12		14	2	2	1		1	8.00-9.50
Hillmorton	15 Clarence Road	78815	60	F11		14	3	2			2	8.00-9.00
Hollybank	9 St. David's Place	76580	61	D6	RL	21	3	2	2			8.50
Karden House	16 Charlton Street	78521	49	E11		18	5	1			1	8.50-9.00
Kestrel	25 Deganwy Avenue	79347		F9	RL	5	3	1	2			8.00-10.00
Leodis	32 St. Mary's Road	75108	58	F11		24	2	7	3	2	10	12.50-14.50
Lighthouse	Marine Drive, Gt. Orme	75685	54	E11		11	2	1	1	1		7.50-8.00
Lindens	10 Church Walks	76819	61			6	1	2				15.00-17.50
Llys Madoc	14 Charlton St.	77684	50	H12	RL	40	4	6	4	4		8.00-10.00
Lyntara	7 Oxford Road	77430	62	F9	RL	5	3	2	2			8.50-10.50
Lynton	80 Church Walks	76096	54	E9	RL	20	3	4	1	1		8.50-9.00
Mayfair	11 Deganwy Avenue	75057	60	H11		20	3	4	1		5	9.00-14.00
Marine Cottage	116 Penrhyn Beach East	77352	60	F11	RL	3	3	3	3	3	6	11.00-12.00
Mariners Lee	9 Clarence Road	45903				5		2				8.50-10.00
Mayville	4 St. David's Road	77513	58	F6	RL	15	2	2	1	2		7.25-8.25
Minion	21-23 Carmen Sylva Road	75406	54	E11	RL	16	3	3	1	1	4	10.00-11.00
Montclare	4 North Parade	77740	50	F5	RL	28	4	6	3	1	10	8.00-9.00
Moorlands	21 Trinity Avenue	77061	55	G11	RL	36	5	7	3	3	7	11.00
Morlea	Deganwy Avenue	74103	62	E10		4	1	1				9.00-10.00
Mountain View	23 Chapel Street	75152	55	F11	RL	6	2					9.00-9.50
Nant-y-Glyn	59 Church Walks	75585	55	F11		18	3	4				7.50-8.50
Northgate	Central Promenade	75915	50	G12	RL	21	3	3	1	3	3	8.50-10.00
Nuneham House	12 South Parade	77701	60	F9	RL	36	8	8	3		7	12.50-14.50
Oakwood	21 St. David's Road	77369	60	G11	RL	48	8	2	2	2	7	10.00-13.00
Orme View	5 Vaughan Street	79208	55	E11	RL	16	1	3	3		1	9.00-11.00
Pier Gardens	North Parade	70840	60	F9		17	2	1	3	1		8.00-8.50
Plas Ucha	6 Ty Gwyn Road	77114	56	H11		36	9		3			9.50-12.00
Regina	3 Charlton Street	78174	62	H12		6	1	1				8.00
Rhosyn	21/22 Chapel Street	77827	62	F9	RL	20	2	6	2	3	3	9.50-12.00
Rochdale	10 Deganwy Avenue	75530	50	F11	RL	30	6	4	1	1		10.50
Rocksley	Promenade	76481	55	F11	RL	32	4	7	2	1		9.00-10.00
Rosaire	2 St. Seiriols Road	76626	58	F5		25	2	3	3	1		9.50
Rosedene	10 Arvon Avenue	77677	59	E11	RL	20	3	2	2	3		8.50-10.50
		76491	51	G11	RL	28	7	1	1	2	5	9.50-10.50
Aintree	19 Deganwy Avenue	75457	61	F11	RL	22	3	3	2	1	3	9.00-10.00
Alvastrada	24 Caroline Road	78229		E10		20	4	6	4	7		7.75-9.00
Anglesey House	21 Church Walks	75925	53	G12		19	3	4	3	2		9.50-10.00
Arvon House	Arvon Avenue	78121	61	G12	RL	26	7	4	2	3	3	10.00-11.50
Ashbourne	6 Rosebery Avenue	77610	53	F5		10	2	4	2		1	9.00-9.50
Bamford	30 Abbey Road	75901	61	F12		3	1	1	1			7.50
Bay Court	North Parade	77356	45	H11	RL	35	8	5	5	2	4	9.50-11.50
Belvedere	Central Promenade	76398	47	F8	RL	45	8	1	5	3	4	10.00-13.50
Berkeley	14 North Parade	77719	47	G11	FL	38	8	5	1	2	5	13.00
Bodlondeb Castle	Church Walks	77187	61	G12		77	5	6	12	20	3	
Bodnant	39 St. Mary's Road	76936		E10		13	1	3	2	1	3	8.00-10.00
Braemar	5 St. David's Road	76257	53	E11		18	2	2	4	1		On application
Brannock	36 St. David's Road	77483	53	E11		16	2	3	1	1	3	10.00-11.50
Brigstock	1 St. David's Place	76416	53	E11	RL	20	2	2	3	3	2	10.00-11.00
Brig-y-Don	Central Promenade	77319	47	F9	RL	79	15	9	8		15	12.00-13.50
Britannia	Promenade	77185	47	F5		20	3	3	2	1	5	9.00-12.00
Broadway	Mostyn Broadway	76398	57	F9	RL	65	9	8	9	7	12	10.50

PLEASE NOTE: All prices quoted in this list are subject to revision. Proprietors will be pleased to quote current terms on request.

**PUBLIC BUILDINGS AND PLACES OF INTEREST**

- 1. Club Medias Centre, Angle Road, E8
- 2. CNO, Vaynias Street, E9
- 3. Great Orme Tramway Station, G12
- 4. Hospital — General, A9
- 5. Hospital Annex, B10
- 6. St. Llandudno, E13
- 7. Lifeboat House, E11
- 8. Tourist Information Centre, F11
- 9. Old Peoples Centre, D11
- 10. Police Station, E11
- 11. Public Library, E10
- 12. Railway Station, E10
- 13. Chardon House Museum, E10
- 14. Town Hall, E10
- 15. Broadway Miniature Golf Links, E7
- 16. Craig-y-don Park, E5
- 17. Craig-y-don Recreational Ground — Tennis and Bowls, E6
- 18. Children's Playground and Paddling Pool, G4
- 19. St. Llandudno Golf Club, A10
- 20. North Wales Golf Club, B11
- 21. Model Yacht Pond, West Shore, D14
- 22. Pulling Green, West Shore, D14
- 23. West Shore Riding Stables, H11
- 24. Great Orme Cable Lift, G11
- 25. Dol Museum and Model Railway, F7
- 26. Express Coach Park, F7
- 27. Canolfan Aberconwy Centre, E8
- 28. Arcadia Theatre, E8
- 29. Fire Station, E8
- 30. Sports Pavilion, E9
- 31. Mostyn Art Gallery, E9
- 32. Revivals, E9
- 33. Rabbit Hole, E9

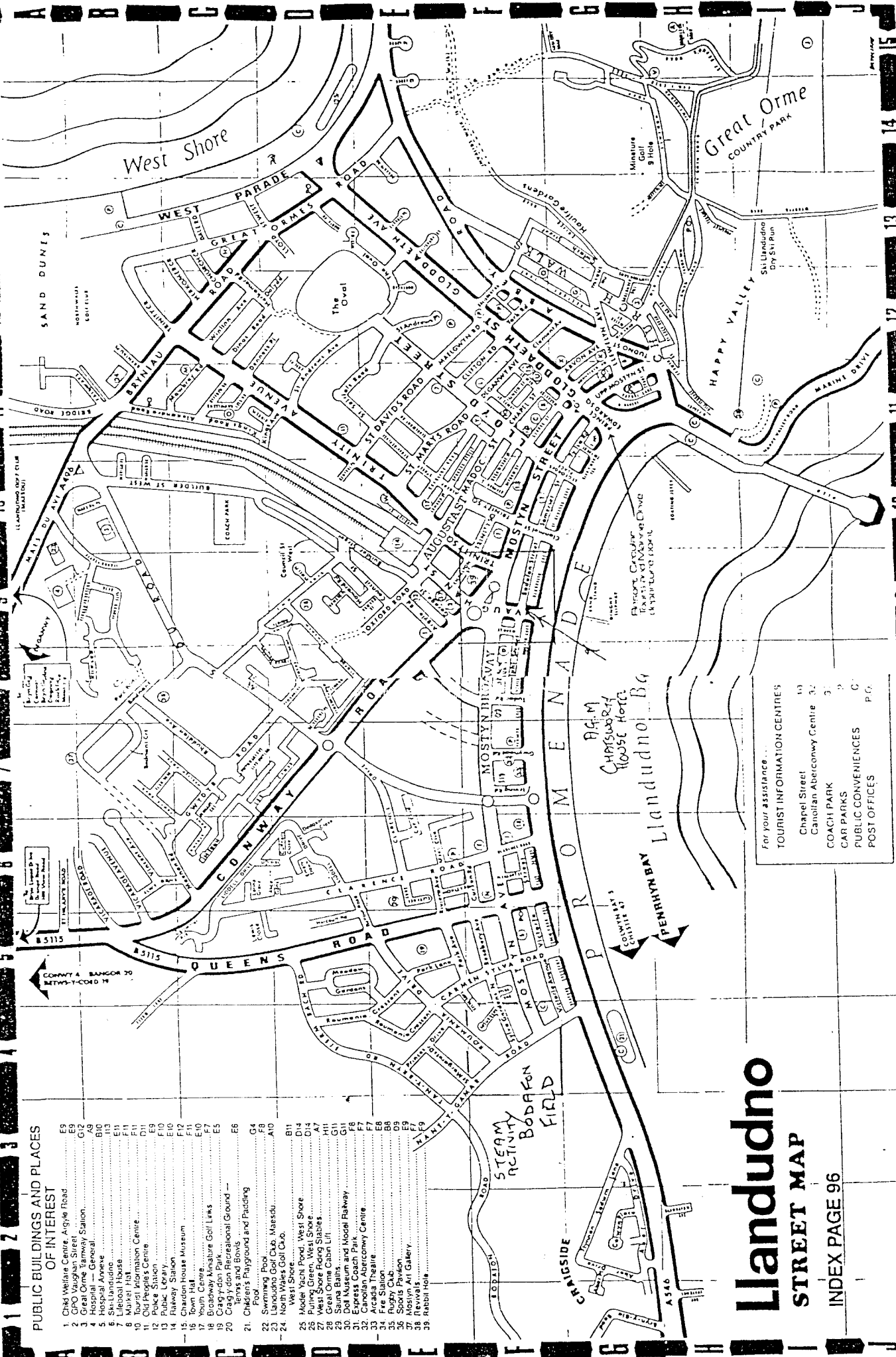
# Llandudno

## STREET MAP

INDEX PAGE 96

For your assistance...

TOURIST INFORMATION CENTRES	
Chapel Street	10
Canolfan Aberconwy Centre	32
COACH PARK	31
CAR PARKS	3
PUBLIC CONVENIENCES	C
POST OFFICES	P.O.



A B C D E F G H I J  
1 2 3 4 5 6 7 8 9 10 11 12 13 14 15